

Davidson County Workforce Development Board

Labor Market Information Division Update

Quick Facts:

Civilian Labor Force Davidson County June 2007

(Not Seasonally Adjusted)

Labor Force - 79,877

Employed - 75,071

Unemployed - 4,806

Unemployment Rate Change May 2007 to June 2007

(Not Seasonally Adjusted)

May 2007 - 5.7

June 2007 - 6.0

Gender of Initial Claimants In Davidson County June 2007

Male - 64%

Female - 36%

Age Ranges of Initial Claimants In Davidson County June 2007

16-19 - 2%

20-24 - 6%

25-34 - 21%

35-44 - 30%

45-54 - 24%

55-64 - 13%

≥65 - 4%

Duration of Unemployment Insurance Benefits

	June 2007	June 2006
Davidson	12.7	13.7
North Carolina	13.4	13.8

Note: Average Duration is defined as the number of weeks compensated for the year, divided by the number of first payments.

Civilian Labor Force Estimates* (Not Seasonally Adjusted)

		June 2007	May 2007	April 2007	June 2006
Davidson	Labor Force	79,877	80,214	80,039	79,805
	Employed	75,071	75,630	75,615	75,046
	Unemployment	4,806	4,584	4,424	4,759
	Unemployment Rate	6.0	5.7	5.5	6.0
North Carolina	Labor Force	4,571,662	4,527,098	4,506,090	4,495,498
	Employed	4,336,722	4,312,936	4,303,189	4,270,872
	Unemployment	234,940	214,162	202,901	224,626
	Unemployment Rate	5.1	4.7	4.5	5.0

Note: July county rates will be released on August 24, 2007.

*2007 data are preliminary, while 2006 data are benchmarked.

Announced Business Closings & Layoffs* June 2007 - June 2006

	Closings	Layoffs
2007	2	4
2006	9	3

* Totals are not comprehensive, representing only totals as reported.

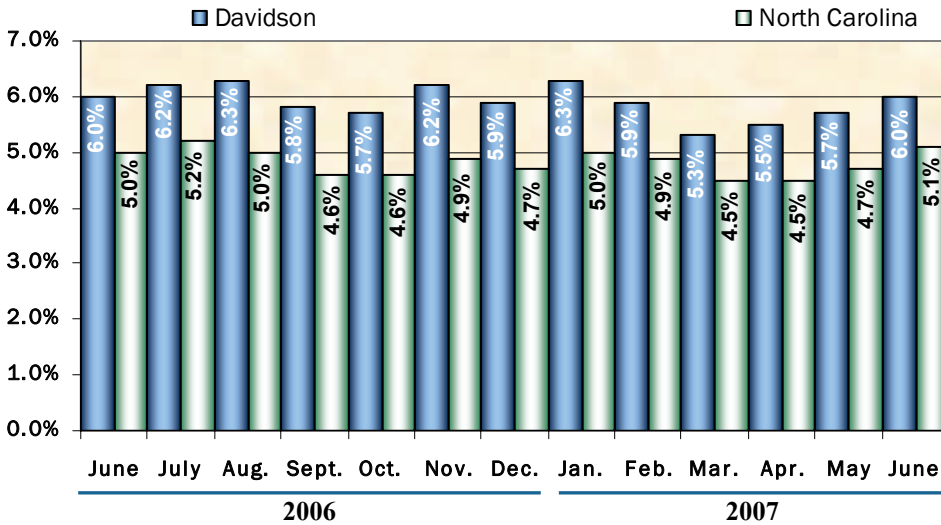
ESC Employment Service Registered Applicants And Job Listings by Occupation 7/1/2006 - 06/30/2007

	Reg. Applicants	Job Openings
Prof., Technical & Managerial	2,088	398
Clerical	2,523	428
Sales	697	117
Domestic Services	44	18
Other Services	2,036	166
Food Services	*	247
Ag., Forestry & Fishery	110	42
Processing	566	52
Machine Trade	1,695	333
Benchwork	1,919	175
Structural Work	1,449	476
Motor Freight & Transportation	547	177
Packaging & Material Handling	1,937	323
Miscellaneous	97	10

* Food Services is included in Other Services as reported in Registered Applicants.

Note: Active Applicants and Job Openings YTD for the period 7/1/06-6/30/07

Unemployment Rate (Not Seasonally Adjusted)* Davidson Compared to North Carolina



* 2007 data are preliminary, while 2006 data are benchmarked.



Individuals Receiving UI Checks

	Davidson
June 2007	1,988
June 2006	2,450

Source: ES-UI Reporting Unit, Labor Market Information Division

U.I. Claims Data Davidson County June 2007

	Initial Claims	Weeks Claimed	Benefits Paid
Davidson	1,047	6,440	\$1,390,651
North Carolina	41,788	294,140	\$70,515,677

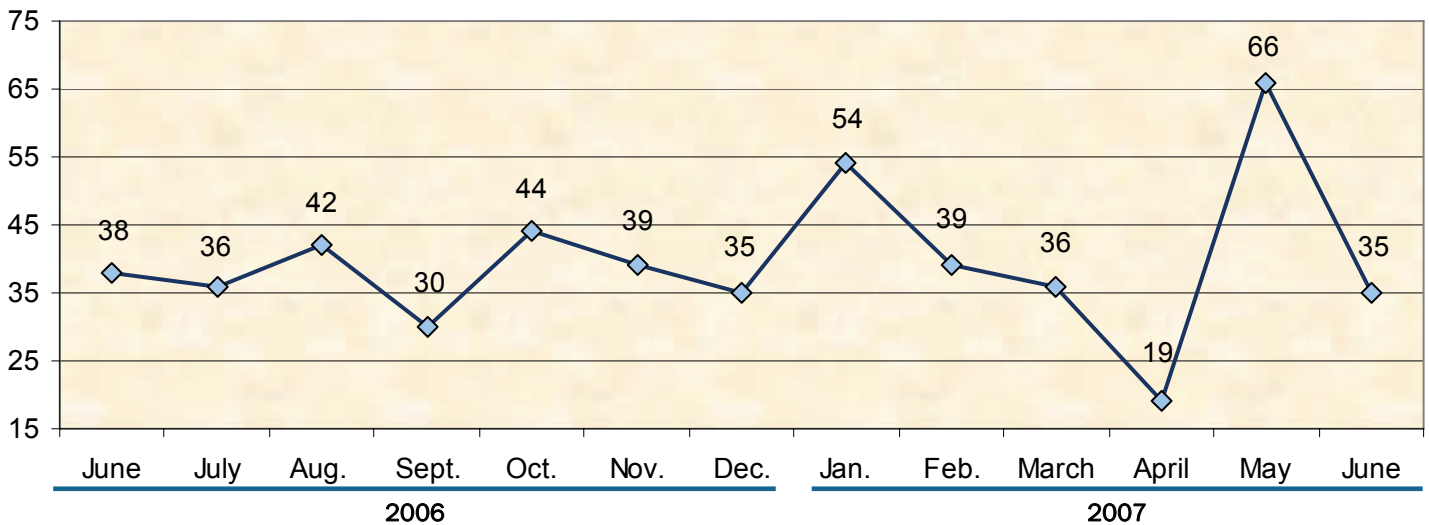
Source: ES-UI Reporting Unit, Labor Market Information Division

New Vehicle Registrations

June 2007	June 2006
557	581

Source: NC Automobile Dealers Association

New Corporations, June 2006 — June 2007



Source: Department of the NC Secretary of State

Data Provided By: Labor Market Information Division, Employment Security Commission of North Carolina

P. O. Box 25903 Raleigh, NC 27611

Phone: (919) 733-2936 Fax (919) 733-8662

E-mail: esc.lmi.inquires@ncmail.net

Web site: www.ncesc.com