

Davidson County Workforce Development Board

Labor Market Information Division Update

Quick Facts:

Civilian Labor Force Davidson County October 2007

(Not Seasonally Adjusted)

Labor Force – 80,988

Employed – 76,652

Unemployed – 4,336

Unemployment Rate Change Sept. 2007 to Oct. 2007

(Not Seasonally Adjusted)

September 2007 – 5.3

October 2007 – 5.4

Gender of Initial Claimants In Davidson County October 2007

Male – 61%

Female – 39%

Age Ranges of Initial Claimants In Davidson County October 2007

16-19 – 1%

20-24 – 8%

25-34 – 20%

35-44 – 26%

45-54 – 26%

55-64 – 17%

≥65 – 2%

Duration of Unemployment Insurance Benefits

| | October 2007 | October 2006 |
|----------------|-----------------|-----------------|
| Davidson | 12.5 | 13.9 |
| North Carolina | 13.7 | 13.6 |

Note: Average Duration is defined as the number of weeks compensated for the year, divided by the number of first payments.

Civilian Labor Force Estimates* (Not Seasonally Adjusted)

| | | October 2007 | September 2007 | August 2007 | October 2006 |
|----------------|-------------------|-----------------|-------------------|----------------|-----------------|
| Davidson | Labor Force | 80,988 | 80,733 | 80,139 | 81,065 |
| | Employed | 76,652 | 76,460 | 75,731 | 76,420 |
| | Unemployment | 4,336 | 4,273 | 4,408 | 4,645 |
| | Unemployment Rate | 5.4 | 5.3 | 5.5 | 5.7 |
| North Carolina | Labor Force | 4,543,048 | 4,540,947 | 4,540,490 | 4,522,409 |
| | Employed | 4,333,665 | 4,335,900 | 4,327,094 | 4,315,431 |
| | Unemployment | 209,383 | 205,047 | 213,396 | 206,978 |
| | Unemployment Rate | 4.6 | 4.5 | 4.7 | 4.6 |

Note: November county rates will be released Jan. 04, 2008.

*2007 data are preliminary, while 2006 data are benchmarked.

Announced Business Closings & Layoffs* October 2007 – October 2006

| | Closings | Layoffs |
|------|----------|---------|
| 2007 | 5 | 0 |
| 2006 | 4 | 7 |

* Totals are not comprehensive, representing only totals as reported.

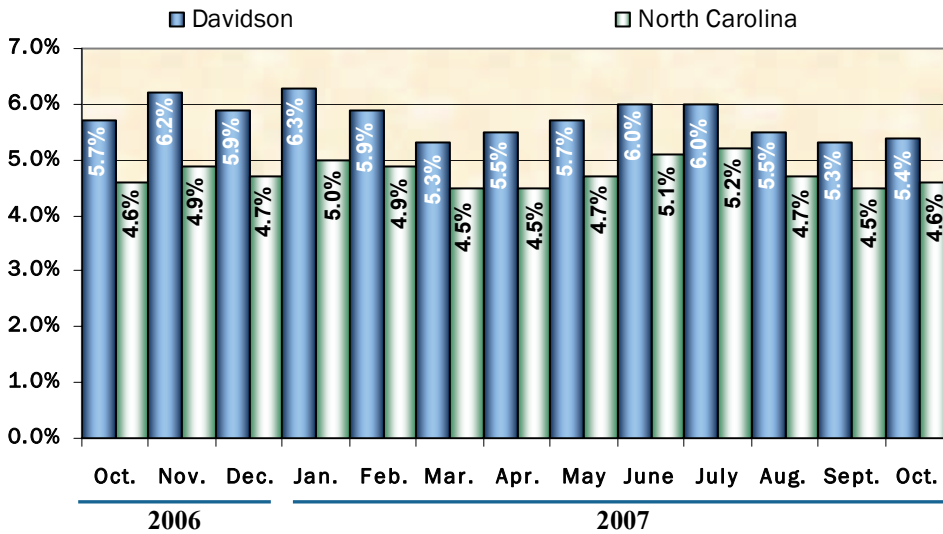
ESC Employment Service Registered Applicants And Job Listings by Occupation 7/1/2007 – 10/31/2007

| | Reg. Applicants | Job Openings |
|--------------------------------|-----------------|--------------|
| Prof., Technical & Managerial | 1,350 | 127 |
| Clerical | 1,601 | 147 |
| Sales | 450 | 25 |
| Domestic Services | 34 | ^ |
| Other Services | 1,320 | 16 |
| Food Services | * | 71 |
| Ag., Forestry & Fishery | 75 | 7 |
| Processing | 323 | 26 |
| Machine Trade | 1,088 | 114 |
| Benchwork | 1,246 | 39 |
| Structural Work | 924 | 77 |
| Motor Freight & Transportation | 338 | 98 |
| Packaging & Material Handling | 1,270 | 70 |
| Miscellaneous | 50 | 7 |

* Food Services is included in Other Services as reported in Registered Applicants. ^ Data of three or less is suppressed.

Note: Active Applicants and Job Openings YTD for the period 7/1/07-6/30/08

Unemployment Rate (Not Seasonally Adjusted)* Davidson Compared to North Carolina



* 2007 data are preliminary, while 2006 data are benchmarked.



Individuals Receiving UI Checks

| | Davidson |
|--------------|----------|
| October 2007 | 1,913 |
| October 2006 | 2,506 |

Source: ES-UI Reporting Unit, Labor Market Information Division

U.I. Claims Data Davidson County October 2007

| | Initial Claims | Weeks Claimed | Benefits Paid |
|----------------|----------------|---------------|---------------|
| Davidson | 1,057 | 7,553 | \$1,683,760 |
| North Carolina | 52,756 | 340,065 | \$77,166,915 |

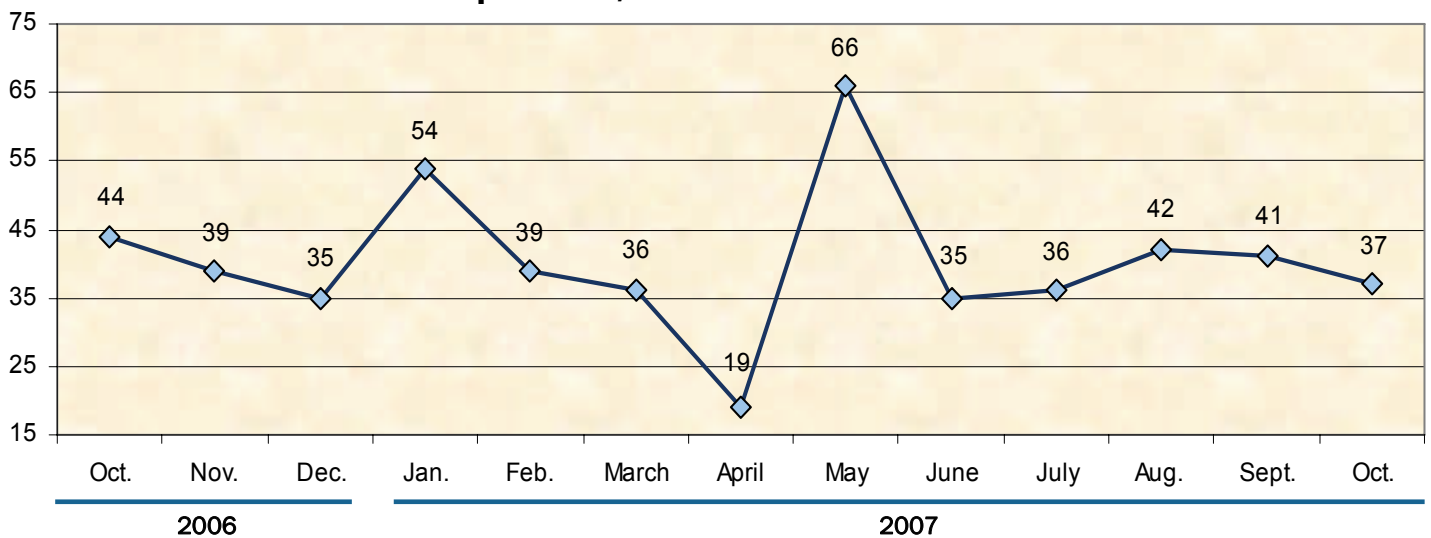
Source: ES-UI Reporting Unit, Labor Market Information Division

New Vehicle Registrations

| October 2007 | October 2006 |
|--------------|--------------|
| 487 | 433 |

Source: NC Automobile Dealers Association

New Corporations, October 2006 — October 2007



Source: Department of the NC Secretary of State

Data Provided By: Labor Market Information Division, Employment Security Commission of North Carolina

P. O. Box 25903 Raleigh, NC 27611

Phone: (919) 733-2936 Fax (919) 733-8662

E-mail: esc.lmi.inquires@ncmail.net

Web site: www.ncesc.com