

High Country WDB

Labor Market Information Division



Civilian Labor Force Estimates*

		June 2007	May 2007	June 2006
Alleghany	Labor Force	4,834	4,989	5,030
	Employed	4,586	4,721	4,798
	Unemployed	248	268	232
	Rate %	5.1	5.4	4.6
Ashe	Labor Force	12,759	13,070	12,681
	Employed	12,069	12,443	11,931
	Unemployed	690	627	750
	Rate %	5.4	4.8	5.9
Avery	Labor Force	8,211	7,999	8,203
	Employed	7,795	7,600	7,804
	Unemployed	416	399	399
	Rate %	5.1	5.0	4.9
Mitchell	Labor Force	7,556	7,594	7,643
	Employed	6,991	7,076	7,155
	Unemployed	565	518	488
	Rate %	7.5	6.8	6.4
Watauga	Labor Force	24,381	23,919	24,295
	Employed	23,397	23,103	23,283
	Unemployed	984	816	1,012
	Rate %	4.0	3.4	4.2
Wilkes	Labor Force	32,029	32,068	30,994
	Employed	30,195	30,137	29,263
	Unemployed	1,834	1,931	1,731
	Rate %	5.7	6.0	5.6
Yancey	Labor Force	8,117	8,162	8,087
	Employed	7,627	7,704	7,642
	Unemployed	490	458	445
	Rate %	6.0	5.6	5.5
High Country	Labor Force	97,887	97,801	96,933
	Employed	92,660	92,784	91,876
	Unemployed	5,227	5,017	5,057
	Rate %	5.3	5.1	5.2
Statewide	Labor Force	4,571,662	4,527,098	4,495,498
	Employed	4,336,722	4,312,936	4,270,872
	Unemployed	234,940	214,162	224,626
	Rate %	5.1	4.7	5.0

*Not Seasonally Adjusted

July 2007 area/county rates will be released August 24, 2007.

Quick Facts:

North Carolina
Unemployment Rates
June 2007

Seasonally Adjusted: 4.9

Not Seasonally Adjusted: 5.1

NC UI Average Weekly Benefit
June 2007: \$267.13

NC Maximum Weekly Benefit
Amount: \$476

Gender of Initial Claimants
High Country WDB

June 2007

Male: 56%

Female: 44%

Age Ranges of Initial Claimants
High Country WDB

June 2007

16-19 – 3%

20-24 – 9%

25-34 – 19%

35-44 – 25%

45-54 – 25%

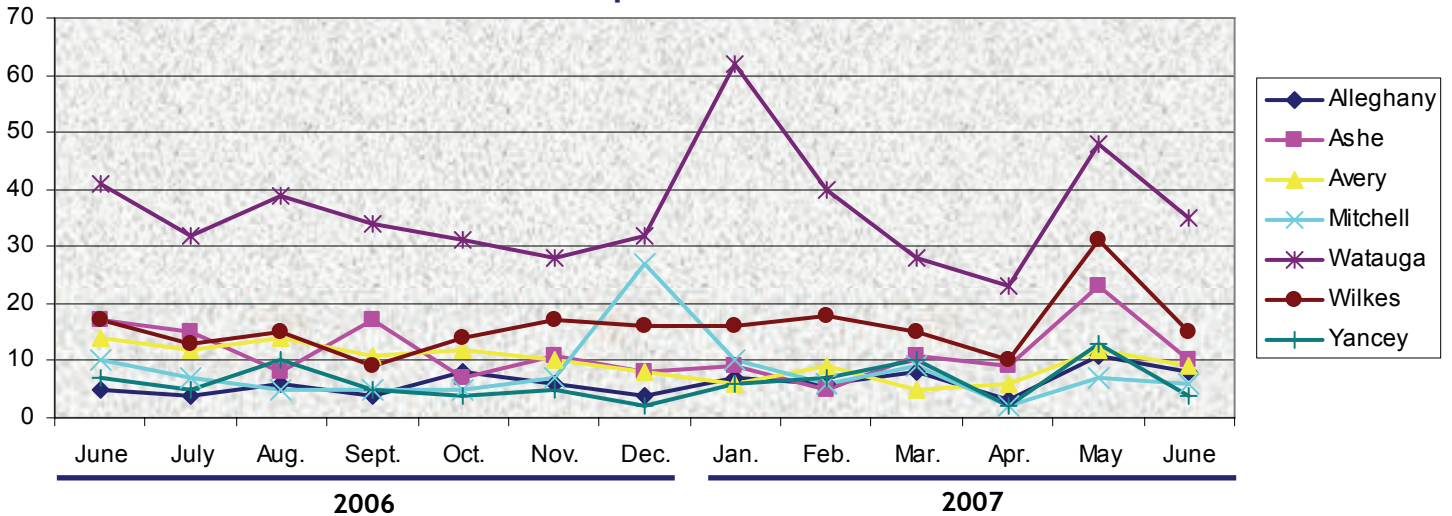
55-64 – 16%

65+ – 3%

Individuals Receiving Checks

	June 2007	June 2006
Alleghany	103	141
Ashe	252	286
Avery	123	152
Mitchell	320	180
Watauga	145	207
Wilkes	577	669
Yancey	125	125
Statewide	79,975	78,843

New Corporations



Source: Department of the NC Secretary of State.

Duration of Benefits By County 12-Month Period Ending*

	June 2007	June 2006
Alleghany	12.5	12.3
Ashe	11.5	13.3
Avery	12.1	12.6
Mitchell	14.4	12.7
Watauga	12.8	13.1
Wilkes	10.8	12.1
Yancey	12.4	12.9
Statewide	13.4	13.8

* Duration is the number of weeks compensated for the year divided by the number of first payments.

Unemployment Insurance Claims, June 2007

	Initial Claims	Benefits Paid
Alleghany	53	\$44,043
Ashe	141	\$147,992
Avery	43	\$80,275
Mitchell	82	\$271,501
Watauga	59	\$104,808
Wilkes	514	\$409,643
Yancey	64	\$108,168
Statewide	41,788	\$70,515,677

ESC Employment Service Registered Applicants, 7/1/2006-06/30/2007

	Alleghany	Ashe	Avery	Mitchell	Watauga	Wilkes	Yancey
Professional, Technical & Managerial	187	431	279	311	668	842	244
Clerical	153	587	210	340	412	979	224
Sales	39	112	67	81	179	232	50
Domestic Services	11	58	18	21	17	24	22
Other Services	213	641	333	354	521	1,055	292
Agriculture, Forestry & Fishery	46	90	64	55	61	114	57
Processing	16	40	11	70	16	493	46
Machine Trade	90	273	68	238	84	535	157
86Benchwork	58	214	75	340	56	469	210
Structural Work	126	416	148	232	303	615	225
Motor Freight & Transportation	23	132	46	53	66	197	60
Packaging & Material Handling	50	125	61	149	79	542	97
Miscellaneous	7	11	5	13	16	29	10

Note: Active Applicants YTD for period 7/1/2006-6/30/2007.

Data provided by:

Labor Market Information Division, Employment Security Commission of North Carolina

P. O. Box 25903, Raleigh, NC 27611

Phone: 919-733-2936

Fax: 919-733-8662

E-mail: esc.lmi.inquires@ncmail.net Web site: www.ncesc.com