

Quick Facts:

*Civilian Labor Force
North Carolina*

March 2009

Seasonally Adjusted

Employed – 4,060,882

Unemployed – 492,512

NC Unemployment Rates

March 2009

Seasonally Adjusted – 10.8

Not Seasonally Adjusted – 10.9

NC UI Average

Weekly Benefit

March 2009 – \$293.57

NC Maximum Weekly Benefit

Amount – \$494

Gender of Initial Claimants

In the Centralina WDB

March 2009

Male – 71%

Female – 29%

Age Ranges of Initial Claimants

In the Centralina WDB

March 2009

16-19 – 1%

20-24 – 8%

25-34 – 21%

35-44 – 28%

45-54 – 26%

55-64 – 14%

≥65 – 2%

Civilian Labor Force Estimates* *Not Seasonally Adjusted*

		March 2009	February 2009	March 2008
Anson	Labor Force	10,413	10,450	10,418
	Employed	8,872	8,911	9,659
	Unemployed	1,541	1,539	759
	Unemployment Rate	14.8	14.7	7.3
Cabarrus	Labor Force	82,822	82,973	83,845
	Employed	73,428	73,747	79,935
	Unemployed	9,394	9,226	3,910
	Unemployment Rate	11.3	11.1	4.7
Iredell	Labor Force	82,870	82,925	77,659
	Employed	72,353	72,237	73,628
	Unemployed	10,517	10,688	4,031
	Unemployment Rate	12.7	12.9	5.2
Lincoln	Labor Force	41,052	41,093	39,246
	Employed	35,038	35,044	36,860
	Unemployed	6,014	6,049	2,386
	Unemployment Rate	14.6	14.7	6.1
Rowan	Labor Force	73,152	73,484	69,796
	Employed	63,813	64,710	66,007
	Unemployed	9,339	8,774	3,789
	Unemployment Rate	12.8	11.9	5.4
Stanly	Labor Force	31,086	31,048	29,939
	Employed	27,235	27,270	28,339
	Unemployed	3,851	3,778	1,600
	Unemployment Rate	12.4	12.2	5.3
Union	Labor Force	91,497	91,967	93,475
	Employed	81,829	82,185	89,081
	Unemployed	9,668	9,782	4,394
	Unemployment Rate	10.6	10.6	4.7
Centralina	Labor Force	412,892	413,940	404,378
	Employed	362,568	364,104	383,509
	Unemployed	50,324	49,836	20,869
	Unemployment Rate	12.2	12.0	5.2
North Carolina	Labor Force	4,526,737	4,555,687	4,509,296
	Employed	4,031,885	4,044,235	4,272,230
	Unemployed	494,852	511,452	237,066
	Unemployment Rate	10.9	11.2	5.3

Source: Labor Area Unemployment Statistics

*March 2009 data are preliminary, while February 2009 are revised and March 2008 data are benchmarked.

Labor Market Information Update

Unemployment Insurance Claims, March 2009

	Initial Claims	Weeks Claimed	UI Benefits Paid	Individuals Receiving Checks
Anson	453	3,335	\$694,990	806
Cabarrus	2,373	20,723	\$5,491,921	4,635
Iredell	3,100	25,469	\$7,041,995	6,240
Lincoln	2,048	12,796	\$3,373,020	3,408
Rowan	2,968	21,433	\$5,980,647	5,627
Stanly	1,241	8,767	\$2,181,214	2,224
Union	2,175	20,490	\$5,732,400	4,528
Statewide	134,964	1,080,554	\$268,598,802	256,930

Source: ES-UI Reporting Unit, Labor Market Information Division

Duration of Unemployment Insurance Benefits For 12 Months Ending March 31, 2009

Anson	Cabarrus	Iredell	Lincoln	Rowan	Stanly	Union	North Carolina
13.1	13.8	12.4	12.5	12.3	12.2	14.1	13.3

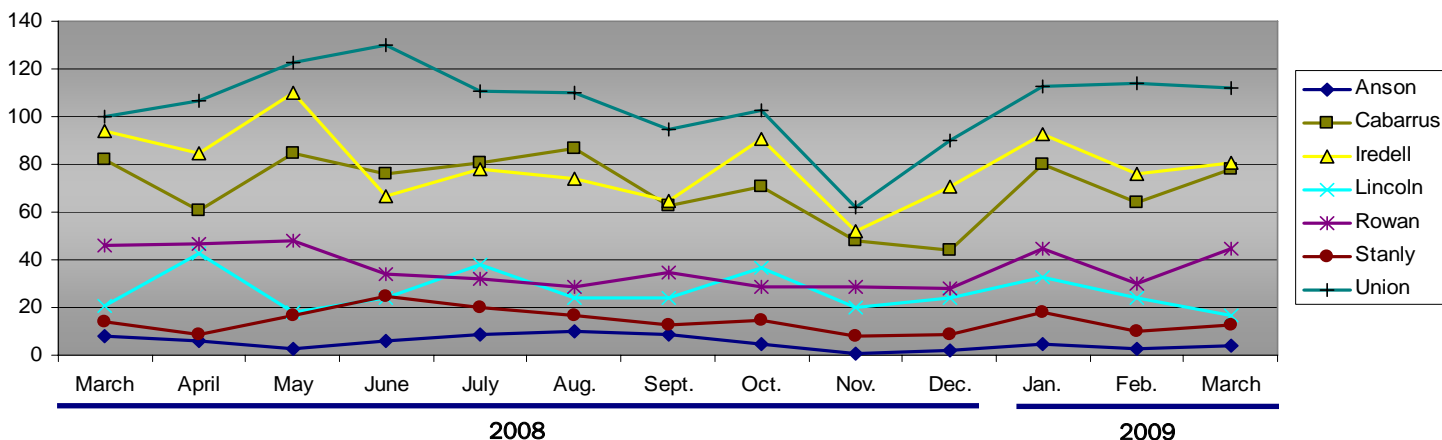
Note: Duration is the number of weeks compensated for the year divided by the number of first payments.

ESC Employment Service Registered Applicants, 7/1/2008–03/31/2009

	Anson	Cabarrus	Iredell	Lincoln	Rowan	Stanly	Union
Professional, Technical & Managerial	456	3,384	2,967	1,157	1,998	996	3,172
Clerical	393	2,315	2,112	933	1,997	769	1,896
Sales	104	987	873	360	747	275	924
Domestic Services	11	47	57	24	44	27	45
Other Services	730	1,813	2,074	753	2,393	949	1,210
Agriculture, Forestry & Fishery	96	179	179	64	157	81	150
Processing	349	497	475	176	473	249	376
Machine Trade	253	1,070	1,821	1,046	1,574	575	798
Benchwork	153	440	959	606	606	277	358
Structural Work	285	1,928	1,629	964	2,419	969	1,622
Motor Freight & Transportation	155	691	642	318	626	234	436
Packaging & Material Handling	394	1,304	1,714	760	1,690	499	696
Miscellaneous	30	111	123	41	110	52	170

Note: Active Applicants and Job Openings YTD for the period 7/01/08–06/30/09.

New Corporations, March 2008 – March 2009



Source: Department of the NC Secretary of State

Data provided by:

Labor Market Information, Employment Security Commission of North Carolina

P.O. Box 25903, Raleigh NC 27611

Phone: 919-733-2936 Fax: 919-733-8662

E-mail: esc.lmi.inquiries@ncmail.net Web site: www.ncesc.com