

Quick Facts:

Civilian Labor Force North Carolina

January 2009

Seasonally Adjusted

Employed – 4,109,016

Unemployed – 443,069

NC Unemployment Rates

January 2009

Seasonally Adjusted – 9.7

Not Seasonally Adjusted – 10.3

NC UI Average

Weekly Benefit

January 2009 – \$282.99

NC Maximum Weekly Benefit

Amount – \$494

Gender of Initial Claimants

In the Centralina WDB

January 2009

Male – 71%

Female – 29%

Age Ranges of Initial Claimants

In the Centralina WDB

January 2009

16-19 – 1%

20-24 – 8%

25-34 – 21%

35-44 – 28%

45-54 – 26%

55-64 – 14%

≥65 – 2%

Civilian Labor Force Estimates* *Not Seasonally Adjusted*

		January 2009	December 2008	January 2008
Anson	Labor Force	10,575	10,901	10,715
	Employed	9,118	9,529	9,906
	Unemployed	1,457	1,372	809
	Unemployment Rate	13.8	12.6	7.6
Cabarrus	Labor Force	83,901	81,662	81,672
	Employed	75,466	74,746	77,700
	Unemployed	8,435	6,916	3,972
	Unemployment Rate	10.1	8.5	4.9
Iredell	Labor Force	79,709	82,975	81,687
	Employed	70,344	75,366	77,504
	Unemployed	9,365	7,609	4,183
	Unemployment Rate	11.7	9.2	5.1
Lincoln	Labor Force	39,580	40,558	40,884
	Employed	34,544	36,323	38,553
	Unemployed	5,036	4,235	2,331
	Unemployment Rate	12.7	10.4	5.7
Rowan	Labor Force	70,955	73,011	72,075
	Employed	62,876	66,253	67,510
	Unemployed	8,079	6,758	4,565
	Unemployment Rate	11.4	9.3	6.3
Stanly	Labor Force	30,253	31,215	31,324
	Employed	26,599	28,241	29,710
	Unemployed	3,654	2,974	1,614
	Unemployment Rate	12.1	9.5	5.2
Union	Labor Force	93,086	89,850	89,941
	Employed	84,100	82,529	85,790
	Unemployed	8,986	7,321	4,151
	Unemployment Rate	9.7	8.1	4.6
Centralina	Labor Force	408,059	410,172	408,298
	Employed	363,047	372,987	386,673
	Unemployed	45,012	37,185	21,625
	Unemployment Rate	11.0	9.1	5.3
North Carolina	Labor Force	4,517,751	4,518,472	4,501,195
	Employed	4,053,739	4,137,880	4,260,448
	Unemployed	464,012	380,592	240,747
	Unemployment Rate	10.3	8.4	5.3

*January 2009 and December 2008 county data are preliminary, while January 2008 data are revised. January 2009 state data are preliminary, while 2008 data are benchmarked.

Labor Market Information Update

Unemployment Insurance Claims, January 2009

	Initial Claims	Weeks Claimed	UI Benefits Paid	Individuals Receiving Checks
Anson	774	3,184	\$607,695	897
Cabarrus	2,556	15,315	\$3,608,046	3,843
Iredell	3,531	19,232	\$4,742,821	5,478
Lincoln	2,265	9,994	\$2,448,593	3,183
Rowan	3,723	15,704	\$3,638,923	4,362
Stanly	1,849	8,030	\$1,754,616	2,390
Union	2,615	15,654	\$4,063,701	3,903
Statewide	158,659	841,306	\$201,536,951	234,114

Source: ES-UI Reporting Unit, Labor Market Information Division

Duration of Unemployment Insurance Benefits For 12 Months Ending Jan. 31, 2009

Anson	Cabarrus	Iredell	Lincoln	Rowan	Stanly	Union	North Carolina
11.9	13.4	11.7	11.7	12.7	10.9	13.3	12.8

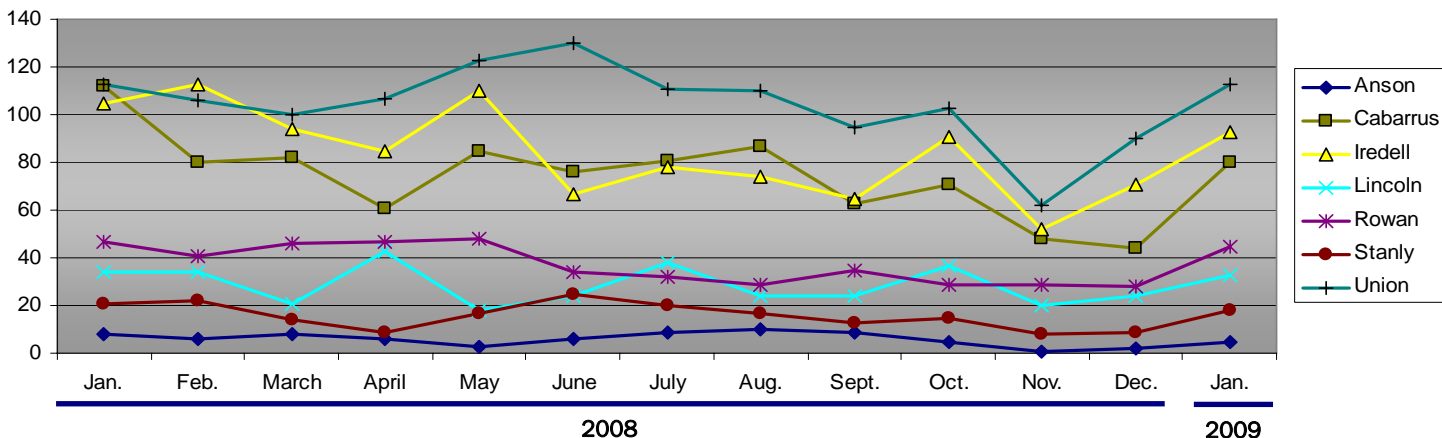
Note: Duration is the number of weeks compensated for the year divided by the number of first payments.

ESC Employment Service Registered Applicants, 7/1/2008–01/31/2009

	Anson	Cabarrus	Iredell	Lincoln	Rowan	Stanly	Union
Professional, Technical & Managerial	413	2,869	2,525	997	1,749	882	2,653
Clerical	367	2,054	1,896	850	1,792	677	1,679
Sales	95	851	754	315	648	248	771
Domestic Services	11	46	54	20	37	22	41
Other Services	672	1,613	1,845	649	2,170	855	1,057
Agriculture, Forestry & Fishery	92	156	157	56	141	79	133
Processing	324	412	416	158	406	216	309
Machine Trade	230	906	1,537	869	1,317	465	693
Benchwork	141	382	848	541	525	245	304
Structural Work	252	1,649	1,381	801	2,117	856	1,392
Motor Freight & Transportation	135	595	560	282	558	211	372
Packaging & Material Handling	354	1,136	1,521	679	1,465	457	625
Miscellaneous	28	87	100	37	101	46	147

Note: Active Applicants and Job Openings YTD for the period 7/01/08–06/30/09.

New Corporations, January 2008 – January 2009



Source: Department of the NC Secretary of State

Data provided by:

Labor Market Information, Employment Security Commission of North Carolina

P.O. Box 25903, Raleigh NC 27611

Phone: 919-733-2936 Fax: 919-733-8662

E-mail: esc.lmi.inquiries@ncmail.net Web site: www.ncesc.com