

## Quick Facts:

### Civilian Labor Force North Carolina

February 2009

Seasonally Adjusted

Employed – 4,093,625

Unemployed – 491,067

### NC Unemployment Rates

February 2009

Seasonally Adjusted – 10.7

Not Seasonally Adjusted – 11.3

### NC UI Average

Weekly Benefit

February 2009 – \$290.06

### NC Maximum Weekly Benefit

Amount – \$494

### Gender of Initial Claimants

In the Centralina WDB

February 2009

Male – 71%

Female – 29%

### Age Ranges of Initial Claimants

In the Centralina WDB

February 2009

16-19 – 1%

20-24 – 7%

25-34 – 19%

35-44 – 29%

45-54 – 27%

55-64 – 15%

≥65 – 2%

## Civilian Labor Force Estimates\* *Not Seasonally Adjusted*

		February 2009	January 2009	February 2008
<b>Anson</b>	Labor Force	10,449	10,458	10,711
	Employed	8,892	9,012	9,899
	Unemployed	1,557	1,446	812
	Unemployment Rate	14.9	13.8	7.6
<b>Cabarrus</b>	Labor Force	82,865	82,948	81,523
	Employed	73,595	74,586	77,647
	Unemployed	9,270	8,362	3,876
	Unemployment Rate	11.2	10.1	4.8
<b>Iredell</b>	Labor Force	82,953	81,546	81,414
	Employed	72,239	72,255	77,325
	Unemployed	10,714	9,291	4,089
	Unemployment Rate	12.9	11.4	5.0
<b>Lincoln</b>	Labor Force	41,088	40,109	40,949
	Employed	35,022	35,126	38,594
	Unemployed	6,066	4,983	2,355
	Unemployment Rate	14.8	12.4	5.8
<b>Rowan</b>	Labor Force	73,488	72,499	71,231
	Employed	64,706	64,481	67,286
	Unemployed	8,782	8,018	3,945
	Unemployment Rate	12.0	11.1	5.5
<b>Stanly</b>	Labor Force	31,064	30,884	31,262
	Employed	27,266	27,272	29,590
	Unemployed	3,798	3,612	1,672
	Unemployment Rate	12.2	11.7	5.3
<b>Union</b>	Labor Force	91,793	92,023	90,106
	Employed	82,015	83,120	85,732
	Unemployed	9,778	8,903	4,374
	Unemployment Rate	10.7	9.7	4.9
<b>Centralina</b>	Labor Force	413,700	410,467	407,196
	Employed	363,735	365,852	386,073
	Unemployed	49,965	44,615	21,123
	Unemployment Rate	12.1	10.9	5.2
<b>North Carolina</b>	Labor Force	4,556,354	4,515,832	4,493,804
	Employed	4,043,695	4,055,997	4,252,331
	Unemployed	512,659	459,835	241,473
	Unemployment Rate	11.3	10.2	5.4

\*February 2009 data are preliminary, while January 2009 are revised. February 2008 county data are revised, while February 2008 state data are benchmarked.

# Labor Market Information Update

## Unemployment Insurance Claims, February 2009

	Initial Claims	Weeks Claimed	UI Benefits Paid	Individuals Receiving Checks
Anson	351	2,641	\$560,856	739
Cabarrus	2,095	15,824	\$4,218,810	4,151
Iredell	3,441	19,955	\$5,395,674	5,628
Lincoln	1,995	10,280	\$2,661,722	3,214
Rowan	4,452	17,107	\$4,692,786	5,207
Stanly	1,358	6,976	\$1,677,509	2,112
Union	1,897	16,034	\$4,352,656	4,093
Statewide	120,379	852,489	\$212,218,918	233,077

Source: ES-UI Reporting Unit, Labor Market Information Division

## Duration of Unemployment Insurance Benefits For 12 Months Ending Feb. 28, 2009

Anson	Cabarrus	Iredell	Lincoln	Rowan	Stanly	Union	North Carolina
12.4	13.3	11.6	11.9	11.6	11.4	13.6	12.9

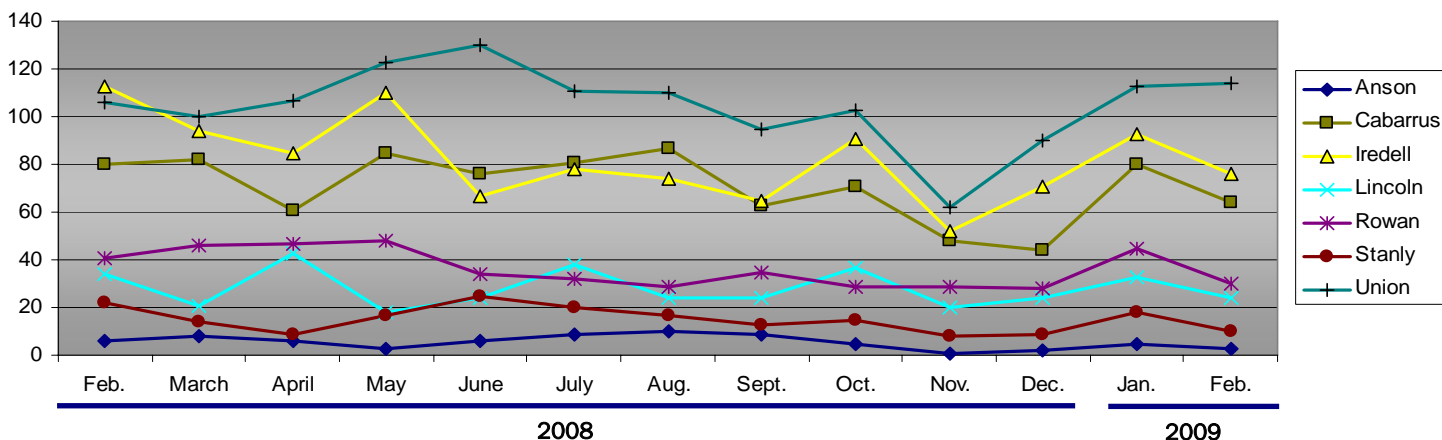
Note: Duration is the number of weeks compensated for the year divided by the number of first payments.

## ESC Employment Service Registered Applicants, 7/1/2008–02/28/2009

	Anson	Cabarrus	Iredell	Lincoln	Rowan	Stanly	Union
Professional, Technical & Managerial	436	3,124	2,739	1,077	1,878	937	2,936
Clerical	380	2,189	2,006	892	1,889	720	1,769
Sales	99	918	815	330	701	258	834
Domestic Services	11	47	55	21	41	26	41
Other Services	698	1,701	1,949	691	2,276	902	1,125
Agriculture, Forestry & Fishery	96	167	165	60	145	80	144
Processing	333	450	447	170	441	232	334
Machine Trade	242	995	1,664	940	1,444	512	733
Benchwork	143	410	903	575	568	262	326
Structural Work	262	1,787	1,512	869	2,261	912	1,513
Motor Freight & Transportation	147	637	592	302	589	225	409
Packaging & Material Handling	371	1,225	1,609	720	1,581	480	661
Miscellaneous	29	93	113	40	103	49	156

Note: Active Applicants and Job Openings YTD for the period 7/01/08–06/30/09.

## New Corporations, February 2008 – February 2009



Source: Department of the NC Secretary of State

Data provided by:

Labor Market Information, Employment Security Commission of North Carolina

P.O. Box 25903, Raleigh NC 27611

Phone: 919-733-2936 Fax: 919-733-8662

E-mail: [esc.lmi.inquiries@ncmail.net](mailto:esc.lmi.inquiries@ncmail.net) Web site: [www.ncesc.com](http://www.ncesc.com)