

Quick Facts:

**Civilian Labor Force
North Carolina
August 2009**

Seasonally Adjusted

Employed - 4,031,573

Unemployed - 488,974

**NC Unemployment Rates
August 2009**

Seasonally Adjusted - 10.8

Not Seasonally Adjusted - 10.7

**NC UI Average
Weekly Benefit**

August 2009 - \$302.96

**NC Maximum Weekly Benefit
Amount - \$505**

**Gender of Initial Claimants
In the Centralina WDB
August 2009**

Male - 68%

Female - 32%

**Age Ranges of Initial Claimants
In the Centralina WDB
August 2009**

16-19 - 1%

20-24 - 8%

25-34 - 20%

35-44 - 26%

45-54 - 26%

55-64 - 16%

≥65 - 3%

Civilian Labor Force Estimates* *Not Seasonally Adjusted*

		August 2009	July 2009	August 2008
Anson	Labor Force	10,527	10,440	10,632
	Employed	8,936	8,888	9,586
	Unemployed	1,591	1,552	1,046
	Unemployment Rate	15.1	14.9	9.8
Cabarrus	Labor Force	83,481	83,219	84,744
	Employed	73,952	73,559	79,335
	Unemployed	9,529	9,660	5,409
	Unemployment Rate	11.4	11.6	6.4
Iredell	Labor Force	81,222	82,830	78,560
	Employed	71,128	72,129	72,972
	Unemployed	10,094	10,701	5,588
	Unemployment Rate	12.4	12.9	7.1
Lincoln	Labor Force	39,825	40,178	39,032
	Employed	34,357	34,381	36,048
	Unemployed	5,468	5,797	2,984
	Unemployment Rate	13.7	14.4	7.6
Rowan	Labor Force	70,885	70,804	68,966
	Employed	61,534	61,070	63,261
	Unemployed	9,351	9,734	5,705
	Unemployment Rate	13.2	13.7	8.3
Stanly	Labor Force	30,668	30,802	29,911
	Employed	26,935	26,929	27,773
	Unemployed	3,733	3,873	2,138
	Unemployment Rate	12.2	12.6	7.1
Union	Labor Force	91,849	91,863	94,177
	Employed	82,414	81,975	88,412
	Unemployed	9,435	9,888	5,765
	Unemployment Rate	10.3	10.8	6.1
Centralina	Labor Force	408,457	410,136	406,022
	Employed	359,256	358,931	377,387
	Unemployed	49,201	51,205	28,635
	Unemployment Rate	12.0	12.5	7.1
North Carolina	Labor Force	4,541,306	4,595,200	4,566,697
	Employed	4,055,583	4,085,179	4,259,495
	Unemployed	485,723	510,021	307,202
	Unemployment Rate	10.7	11.1	6.7

Source: Labor Area Unemployment Statistics

*August 2009 data are preliminary, while July 2009 are revised and August 2008 data are benchmarked.

Labor Market Information Update

Unemployment Insurance Claims, August 2009

	Initial Claims	Weeks Claimed	UI Benefits Paid	Individuals Receiving Checks
Anson	446	3,256	\$697,152	851
Cabarrus	1,632	19,269	\$5,383,514	4,511
Iredell	1,702	19,416	\$5,574,516	4,677
Lincoln	915	10,016	\$2,788,167	2,551
Rowan	1,501	18,926	\$5,553,939	4,493
Stanly	662	7,070	\$1,847,107	1,749
Union	1,540	17,879	\$5,064,620	4,189
Statewide	82,299	913,185	\$217,826,045	218,257

Source: ES-UI Reporting Unit, Labor Market Information Division

Duration of Unemployment Insurance Benefits For 12 Months Ending Aug. 31, 2009

Anson	Cabarrus	Iredell	Lincoln	Rowan	Stanly	Union	North Carolina
14.4	16.3	15.8	15.7	15.6	15.5	16.5	15.6

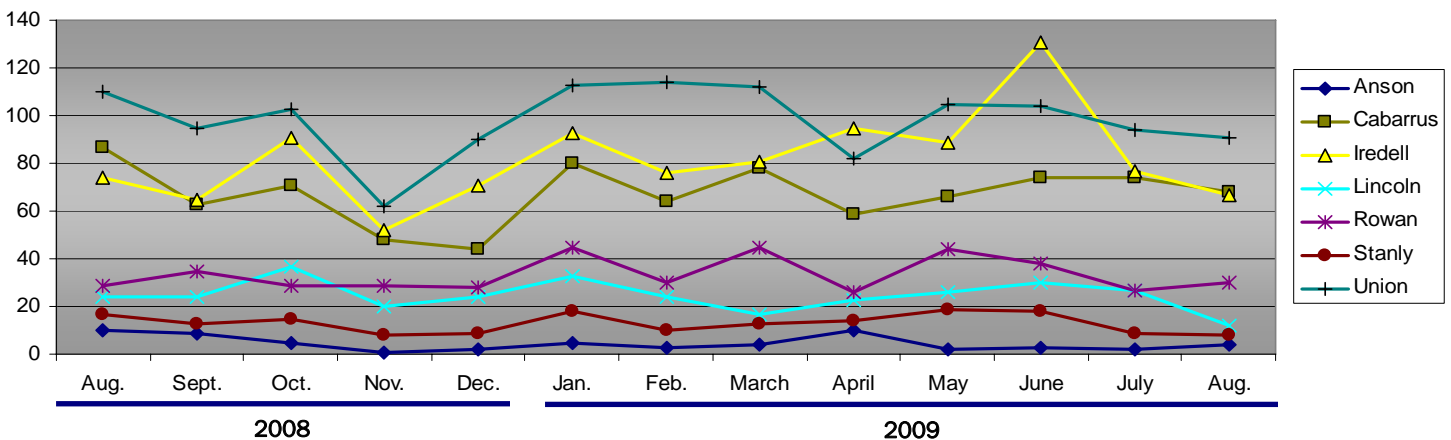
Note: Duration is the number of weeks compensated for the year divided by the number of first payments.

ESC Employment Service Registered Applicants, 7/1/2009–08/31/2009

	Anson	Cabarrus	Iredell	Lincoln	Rowan	Stanly	Union
Professional, Technical & Managerial	809	1,500	659	2,388	311	2,596	2,064
Clerical	615	1,235	459	1,247	228	1,516	1,321
Sales	254	492	190	627	68	722	605
Domestic Services	13	24	20	27	*	19	34
Other Services	451	1,569	533	801	510	1,121	1,286
Agriculture, Forestry & Fishery	51	109	48	104	60	119	106
Processing	119	393	200	253	241	420	333
Machine Trade	759	1,269	500	606	186	796	1,325
Benchwork	405	467	178	236	114	308	703
Structural Work	695	1,908	658	1,096	202	1,382	1,176
Motor Freight & Transportation	193	464	151	306	92	438	433
Packaging & Material Handling	527	1,199	317	459	262	918	1,216
Miscellaneous	29	74	34	96	17	103	95

Note: Active Applicants and Job Openings YTD for the period 7/01/09–06/30/10.

New Corporations, August 2008 – August 2009



Source: Department of the NC Secretary of State

Data provided by:

Labor Market Information, Employment Security Commission of North Carolina

P.O. Box 25903, Raleigh NC 27611

Phone: 919-733-2936 Fax: 919-733-8662

E-mail: esc.lmi.inquiries@ncmail.net Web site: www.ncesc.com